

PROJECTED FLOW RATES BY 2015

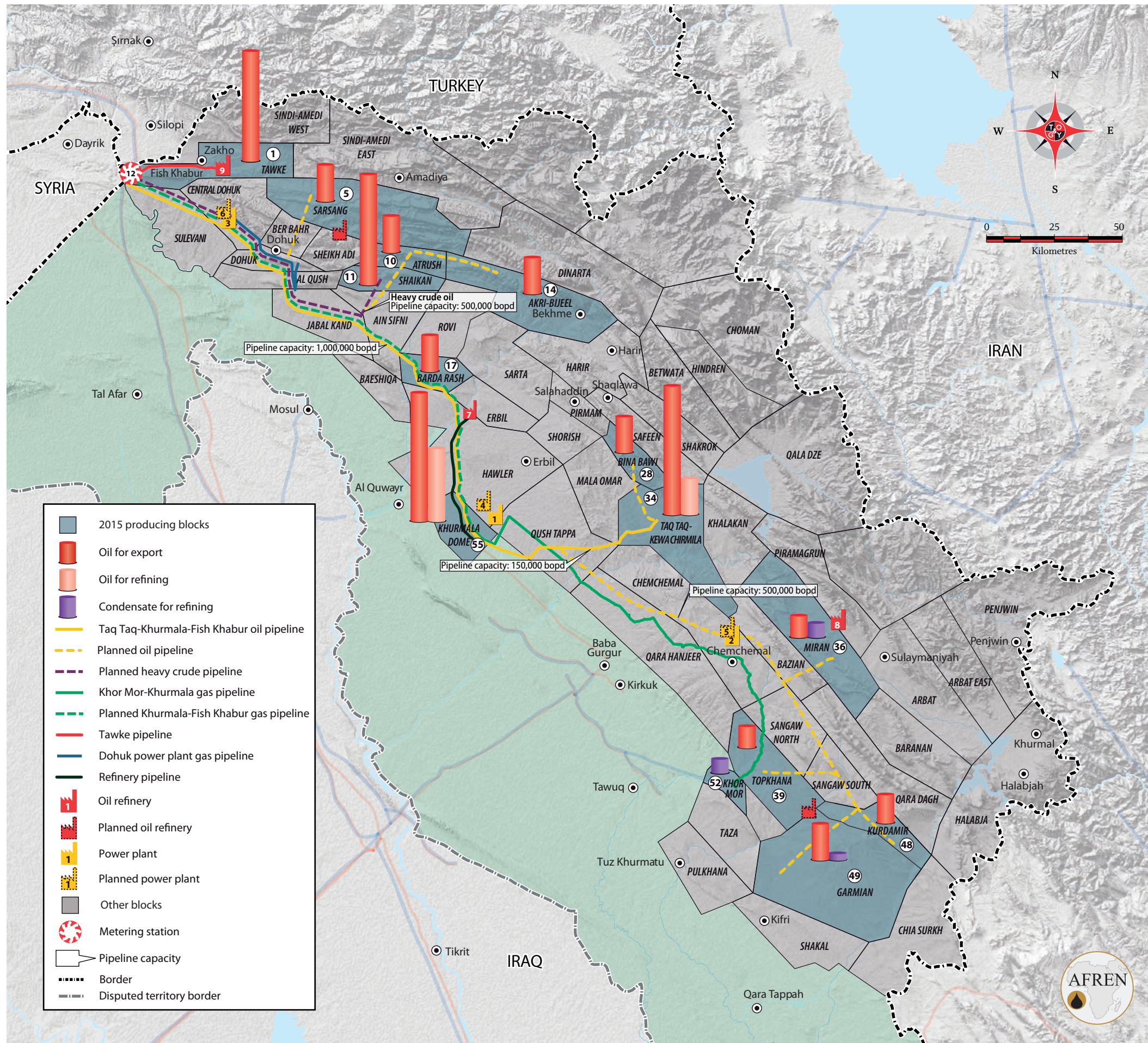
- 1 TAWKE**  
Reserved for export: 150,000 bopd  
Reserved for refining: NA
- 5 SARSANG**  
Reserved for export: 50,000 bopd  
Reserved for refining: NA
- 10 ATRUSH**  
Reserved for export: 50,000 bopd  
Reserved for refining: NA
- 11 SHAIKAN**  
Reserved for export: 150,000 bopd  
Reserved for refining: NA
- 14 AKRI-BIJEEL**  
Reserved for export: 50,000 bopd  
Reserved for refining: NA
- 17 BARDA RASH**  
Reserved for export: 50,000 bopd  
Reserved for refining: NA
- 28 BINA BAWI**  
Reserved for export: 50,000 bopd  
Reserved for refining: NA
- 34 TAQ TAQ & KEWA CHIRMILA**  
Reserved for export: 175,000 bopd  
Reserved for refining: 50,000 bopd
- 36 MIRAN**  
Reserved for export: 30,000 bopd  
Reserved for refining: 20,000 boepd (condensate)
- 39 TOPKHANA**  
Reserved for export: 30,000 bopd  
Reserved for refining: NA
- 48 KURDAMIR**  
Reserved for export: 40,000 bopd  
Reserved for refining: NA
- 49 GARMIAN**  
Reserved for export: 50,000 bopd  
Reserved for refining: 10,000 boepd (condensate)
- 52 KHOR MOR**  
Reserved for export: NA  
Reserved for refining: 20,000 boepd (condensate)
- 55 KHURMALA DOME**  
Reserved for export: 150,000 bopd  
Reserved for refining: 100,000 bopd

**TOTAL**

Reserved for export: 1.025 million bopd  
Reserved for refining: 200,000 boepd  
(oil plus condensate)

**BLOCKS**

- 1 TAWKE**  
Operator: DNO Size: 594 square kilometres
- 5 SARSANG** - Operator: HKN Size: 1,085 square kilometres
- 10 ATRUSH**  
Operator: TAQA Size: 269 square kilometres
- 11 SHAIKAN**  
Operator: Gulf Keystone Size: 283 square kilometres
- 14 AKRI-BIJEEL**  
Operator: MOL Size: 889 square kilometres



- 17 BARDA RASH**  
Operator: Afren Size: 265 square kilometres
- 28 BINA BAWI**  
Operator: OMV Size: 240 square kilometres
- 34 TAQ TAQ & KEWA CHIRMILA**  
Operator: Genel Energy Size: 951 square kilometres
- 36 MIRAN**  
Operator: Heritage Oil Size: 1,015 square kilometres
- 39 TOPKHANA**  
Operator: Talisman Size: 670 square kilometres
- 48 KURDAMIR**  
Operator: Talisman Size: 340 square kilometres
- 49 GARMIAN**  
Operator: WesternZagros Size: 1,778 square kilometres
- 52 KHOR MOR**  
Operator: Crescent Petroleum-Dana Gas Size: 135 square kilometres
- 55 KHURMALA DOME**  
General operator: KAR Group Size: 355 square kilometres

**REFINERIES**

- 7 ERBIL (KALAK)**  
Operator: KAR Group Current capacity: 80,000 bpd  
Planned capacity: 100,000 bpd by 2014
- 8 BAZIAN**  
Operator: WZA Petroleum Current capacity: 34,000 bpd  
Planned capacity: 80,000 bpd by 2014
- 9 TAWKE**  
Operator: DNO Current capacity: 5,000 bpd, field topping plant

**POWER PLANTS**

- 1 ERBIL**  
Operator: Mass Global Current capacity: 750 MW  
Planned capacity: 1 GW
- 2 SULAYMANIYAH (CHEMCHEMAL)**  
Operator: Mass Global Current capacity: 750 MW  
Planned capacity: 1 GW
- 3 DOHUK**  
Operator: Mass Global Current capacity: 500 MW

**PLANNED POWER PLANTS**

- 4 KHURMALA**  
Capacity: 1.2 GW
- 5 SULAYMANIYAH (CHEMCHEMAL)**  
Capacity: 2 GW
- 6 DOHUK**  
Capacity: 1.5 GW

**EXPORT FACILITIES**

- 12 FISH KHABUR**  
Operator: North Oil Company Function: The facility is a metering and truck-loading station and operates as a tie-in to the Kirkuk-Ceyhan pipeline.