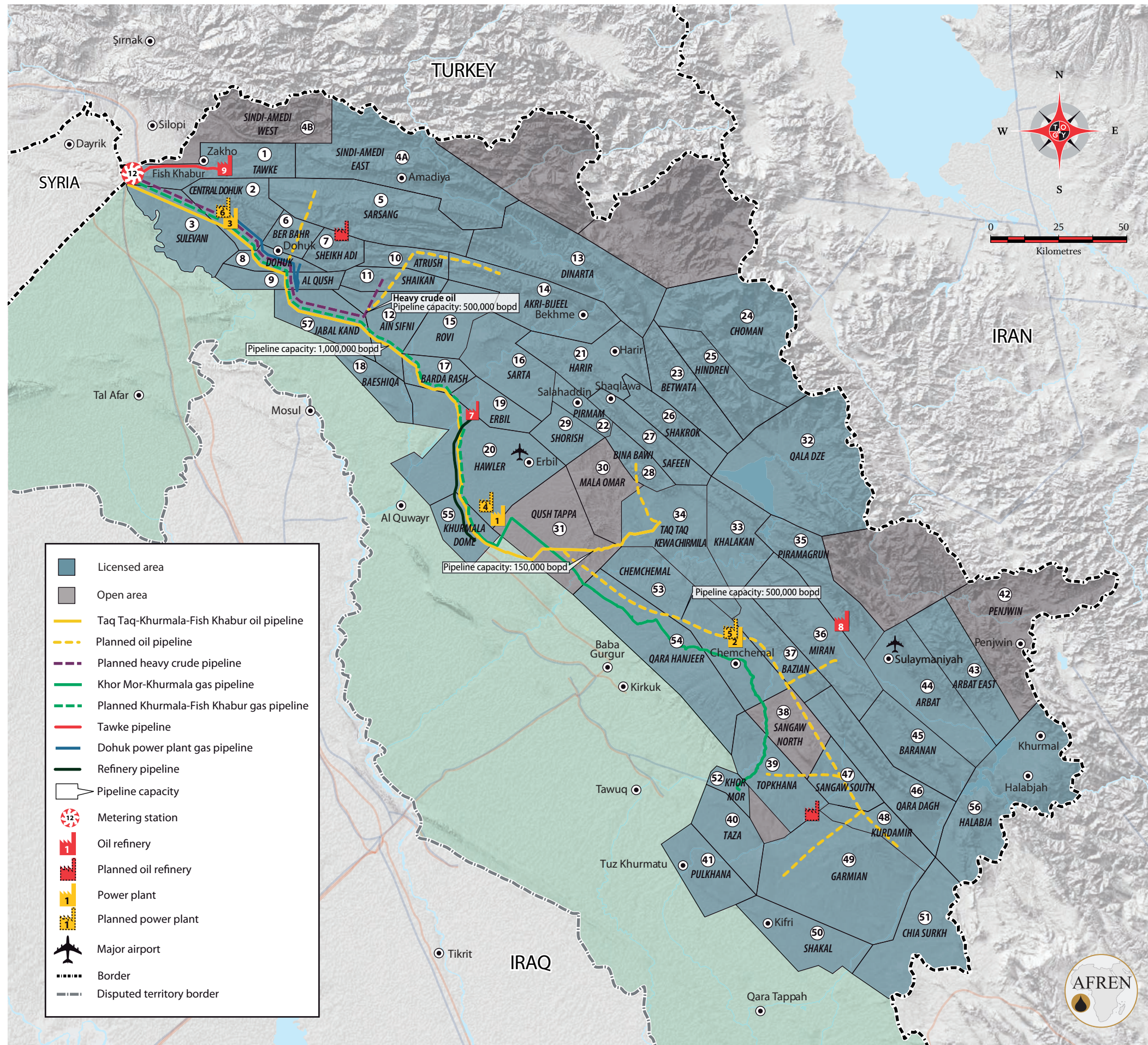


LICENCES

- ① TAWKE - Operator: DNO, 55% net interest Other production-sharing contract (PSC) participant: Genel Energy, 25% KRG back-in interest (BI): 20% fully carried
- ② CENTRAL DOHUK - Operator: Murphy Oil, 50% Other PSC participant: Petroquest Energy, 30% KRG BI: 20% fully carried
- ③ SULEVANI - Operator: Petroquest Energy, 80% KRG BI: 20% fully carried
- ④A SINDI - AMEDI EAST - Operator: Perenco, 30.94% Other PSC participant: Oryx Petroleum, 25.31% KRG BI: 25% part carried, 18.75% net third-party interest
- ④B SINDI - AMEDI WEST - Open licence
- ⑤ SARSANG - Operator: HKN Energy, 56.25% Other PSC participant: Marathon Oil, 18.75% KRG BI: 25% part carried
- ⑥ BER BAHR - Operator: Genel Energy, 40% Other PSC participant: Gulf Keystone, 40% KRG BI: 20% fully carried
- ⑦ SHEIKH ADI - Operator: Gulf Keystone, 80% KRG BI: 20% fully carried
- ⑧ DOHUK - Operator: DNO, 40% Other PSC participant: Genel Energy, 40% KRG BI: 20% fully carried
- ⑨ AL QUSH - Operator: ExxonMobil, 80% KRG BI: 20% fully carried
- ⑩ ATRUSH - Operator: TAQA, 39.9% Other PSC participant: Shamaran, 20.1%, Marathon 15% KRG BI: 20% fully carried
- ⑪ SHAIKAN - Operator: Gulf Keystone, 51% Other PSC participants: MOL, 13.6%, Texas Keystone, 3.4% KRG BI: 20% part carried and 12% net third-party interest
- ⑫ AIN SIFNI - Operator: Hunt Oil, 60% Other PSC participant: Afren, 20% KRG BI: 20% fully carried
- ⑬ DINARTA - Operator: Hess, 64% Other PSC participant: Petroceltic, 16% KRG BI: 20% fully carried
- ⑭ AKRI-BUJEL - Operator: MOL, 51.2% Other PSC participants: Gulf Keystone, 12.8%, KRG BI: 20% part carried and 16% net third-party interest
- ⑮ ROVI - Operator: Chevron, 60% Other PSC participant: OMV, 15% KRG BI: 25% part carried
- ⑯ SARTA - Operator: Chevron, 60% Other PSC participant: OMV, 15% KRG BI: 25% part carried
- ⑰ BARDA RASH - Operator: Komet Group, 20% KRG BI: 20% fully carried
- ⑱ BAESHIQA - Operator: ExxonMobil, 80% KRG BI: 20% fully carried
- ⑲ ERBIL - Operator: DNO, 40% Other PSC participant: NewAge, 40% KRG BI: 20% fully carried
- ⑳ HAWLER - Operator: Oryx Petroleum, 65% Other PSC participant: KNOC, 15%, KRG BI: 20% fully carried
- ㉑ HARIR - Operator: Marathon Oil, 45% Other PSC participant: Total, 35% KRG BI: 20% fully carried
- ㉒ PIRMAM - Operator: ExxonMobil, 80% KRG BI: 20% fully carried
- ㉓ BETWATA - Operator: ExxonMobil, 80% KRG BI: 20% fully carried
- ㉔ CHOMAN - Operator: Turkish entity, 80% KRG BI: 20% fully carried
- ㉕ HINDREN - Operator: Turkish entity, 80% KRG BI: 20% fully carried
- ㉖ SHAKROK - Operator: Hess, 64% Other PSC participant: Petroceltic, 16% KRG BI: 20% fully carried
- ㉗ SAFEEN - Operator: Marathon Oil, 45% Other PSC participant: Total, 35% KRG BI: 20% fully carried
- ㉘ BINA BAWI - Operator: OMV, 36% Other PSC participant: Genel Energy, 44% KRG BI: 20% fully carried
- ㉙ SHORISH - Open licence
- ㉚ MALA OMAR - Open licence
- ㉛ QUSH TAPPA - Open licence
- ㉜ QALA DZE - Operator: Repsol, 80% KRG BI: 20% fully carried
- ㉝ KHALAKAN - Operator: Gas Plus Khalakan, 40% KRG BI: 20% fully carried and 40% net third-party interest, expected to be awarded to a Turkish entity
- ㉞ TAQ TAQ - KEWA CHIRMILA - Operator: TTOPCO (Genel Energy, 44%, Addax Petroleum, 36%), 80% KRG BI: 20% fully carried
- ㉟ PIRAMAGRUN - Operator: Repsol, 80% KRG BI: 20% fully carried



- ④⑥ MIRAN - Operator: Genel Energy, 75% KRG BI: 25% part carried
- ④⑦ BAZIAN - Operator: KNOC-Bazian, 80% KRG BI: 20% part carried
- ④⑧ SANGAW NORTH - Open licence
- ④⑨ TOPKHANA - Operator: Talisman, 60% KRG BI: 20% fully carried and 20% net third-party interest
- ④⑩ TAZA - Operator: Oil Search, 60% Other PSC participant: Total, 20% KRG BI: 20% fully carried
- ④⑪ PULKHANA - Operator: Turkish entity, 40% KRG BI: 20% fully carried and 40% net third-party interest
- ④⑫ PENJWIN - Open licence
- ④⑬ ARBAT EAST - Operator: ExxonMobil, 80% KRG BI: 20% fully carried
- ④⑭ ARBAT - Operator: Turkish entity, 80% KRG BI: 20% fully carried
- ④⑮ BARANAN - Operator: Total, 60% Other PSC participant: Murphy, 20% KRG BI: 20% fully carried
- ④⑯ QARA DAGH - Operator: Chevron 80% KRG BI: 20% fully carried
- ④⑰ SANGAW SOUTH - Operator: KNOC, 30% KRG BI: 20% fully carried and 50% net third-party interest
- ④⑱ KURDAMIR - Operator: Talisman, 40% Other PSC participant: WesternZagros, 40% KRG BI: 20% fully carried
- ④⑲ GARMIAN - Operator: WesternZagros, 40% Other PSC participant: Gazprom Neft, 40% KRG BI: 20% fully carried
- ④⑳ SHAKAL - Operator: Gazprom Neft, 80% KRG BI: 20% fully carried
- ⑤① CHIA SURKH - Operator: Genel Energy, 60% Other PSC participant: Petoil 20% KRG BI: 20% fully carried
- ⑤② KHOR MOR - Crescent Petroleum, Dana Gas
- ⑤③ CHEMCHAMAL - Crescent Petroleum, Dana Gas
- ⑤④ QARA HANJEER - Operator: ExxonMobil, 80% KRG BI: 20% fully carried
- ⑤⑤ KHURMALA DOME - KRG block General operator: Kar Group
- ⑤⑥ HALABJA - Operator: Gazprom Neft, 80% KRG BI: 20% fully carried
- ⑤⑦ JABAL KAND - Operator: Turkish entity, 40% KRG BI: 20% fully carried and 40% net third-party interest

REFINERIES

- ① ERBIL (KALAK) - Operator: KAR Group Current capacity: 80,000 bpd Planned capacity: 100,000 bpd by 2014
- ② BAZIAN - Operator: WZA Petroleum Current capacity: 34,000 bpd Planned capacity: 80,000 bpd by 2014
- ③ TAWKE - Operator: DNO Current capacity: 5,000 bpd, field topping plant

POWER PLANTS

- ① ERBIL - Operator: Mass Global Current capacity: 750 MW Planned capacity: 1 GW
- ② SULAYMANIYAH (CHEMCHAMAL) - Operator: Mass Global Current capacity: 750 MW Planned capacity: 1 GW
- ③ DOHUK - Operator: Mass Global Current capacity: 500 MW

PLANNED POWER PLANTS

- ① KHURMALA - Capacity: 1.2 GW
- ② SULAYMANIYAH (CHEMCHAMAL) - Capacity: 2 GW
- ③ DOHUK - Capacity: 1.5 GW

EXPORT FACILITIES

- ① FISH KHABUR - Operator: North Oil Company Function: The facility is a metering and truck-loading station and operates as a tie-in to the Kirkuk-Ceyhan pipeline.